
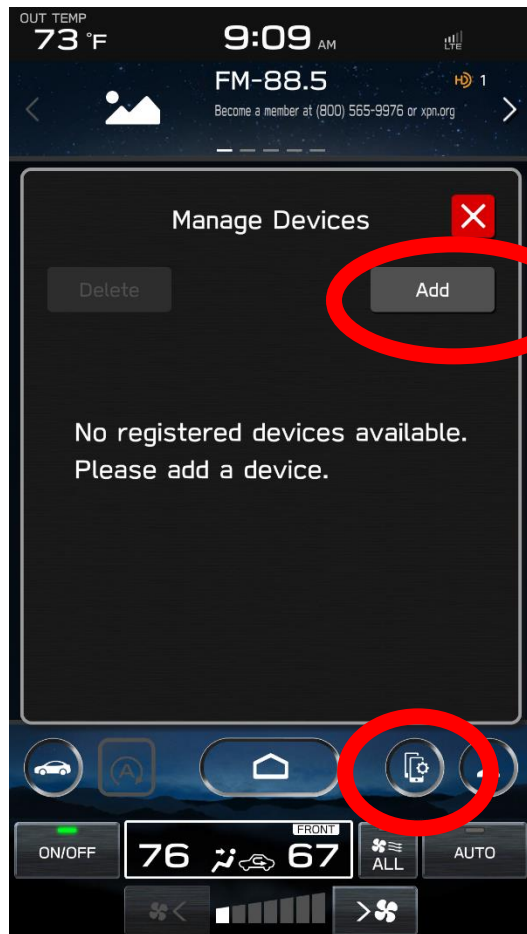
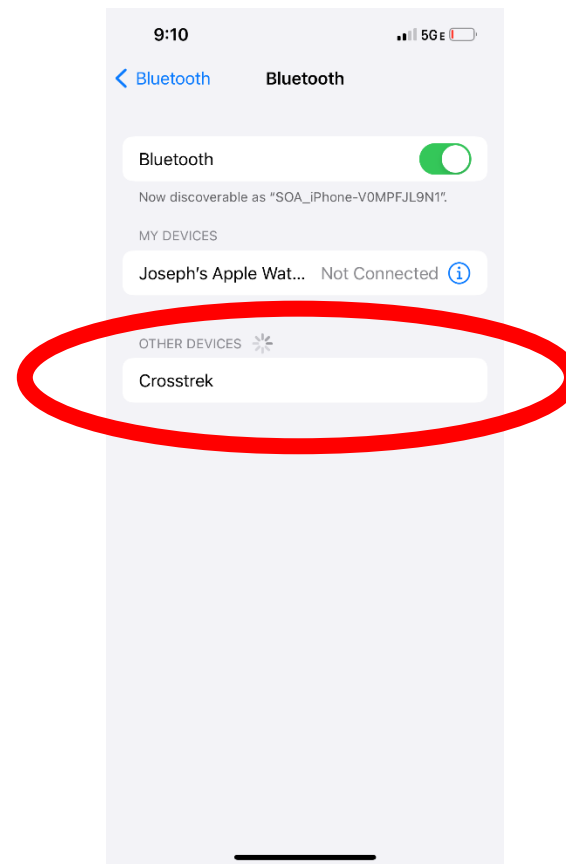


How to setup wireless Apple CarPlay (Using Bluetooth)

1. Select the **MANAGE DEVICES** icon  on your vehicle touch screen display
2. Select **ADD**

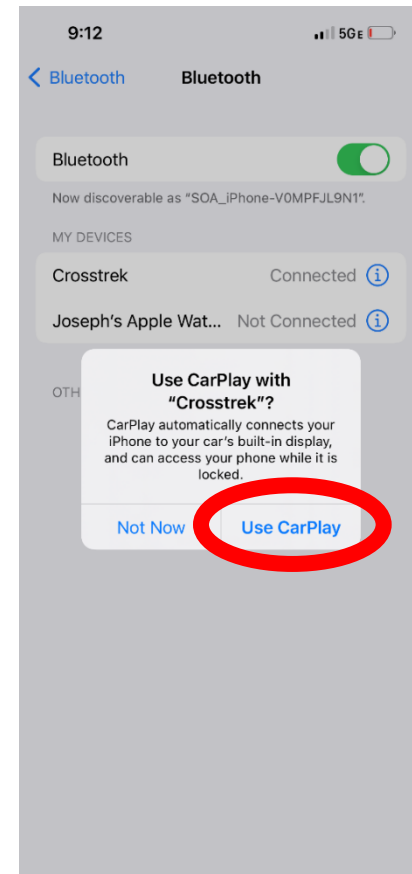
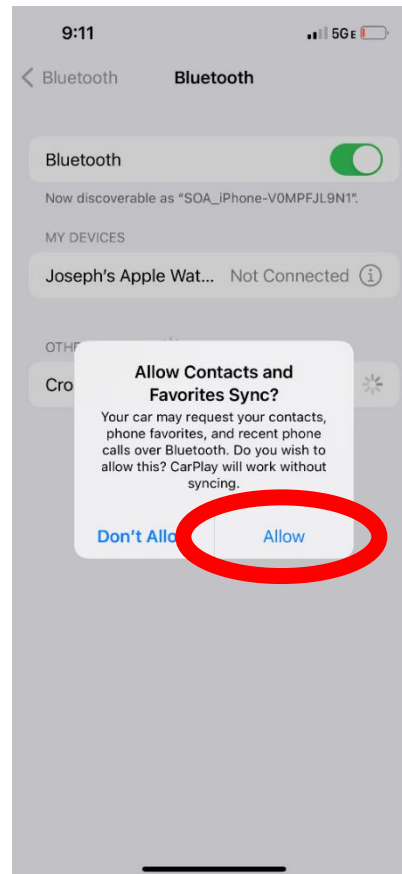
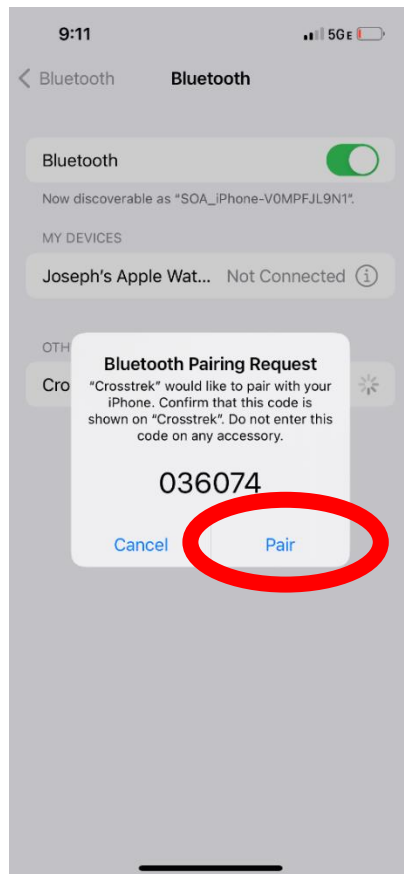


3. Go to **SETTINGS** on your iPhone and select **BLUETOOTH**
4. Select your **VEHICLE** from the device list



How to setup wireless Apple CarPlay (Using Bluetooth)

5. Confirm the **PIN** matches the numbers displayed on your vehicle touch screen display and select **PAIR** on your iPhone
6. Select **ALLOW** contacts and favorites to be transferred on your iPhone
7. Select **USE CARPLAY** on your iPhone

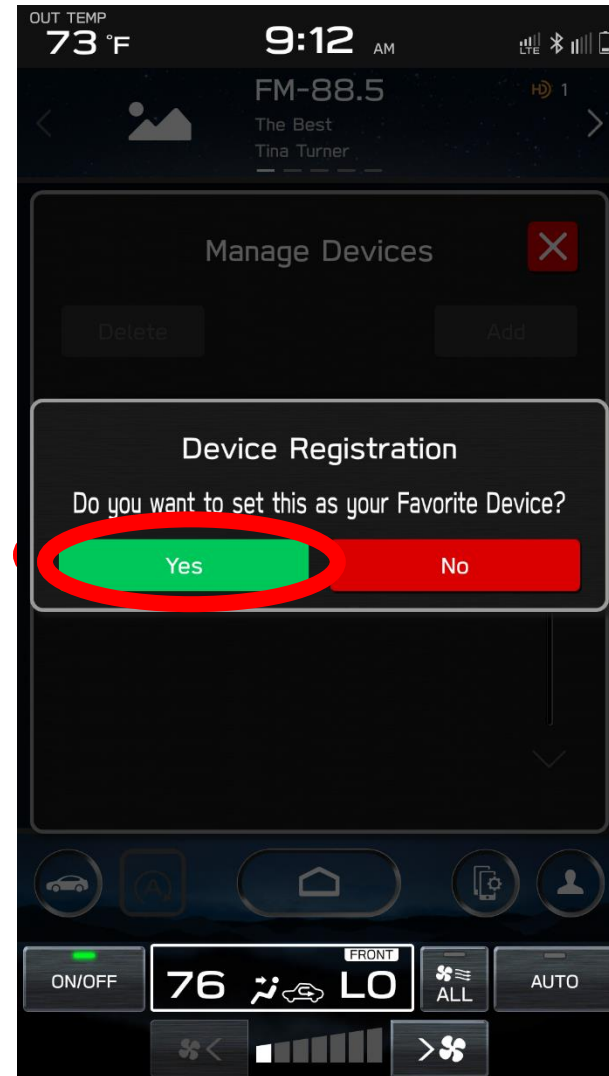


How to setup wireless Apple CarPlay (Using Bluetooth)

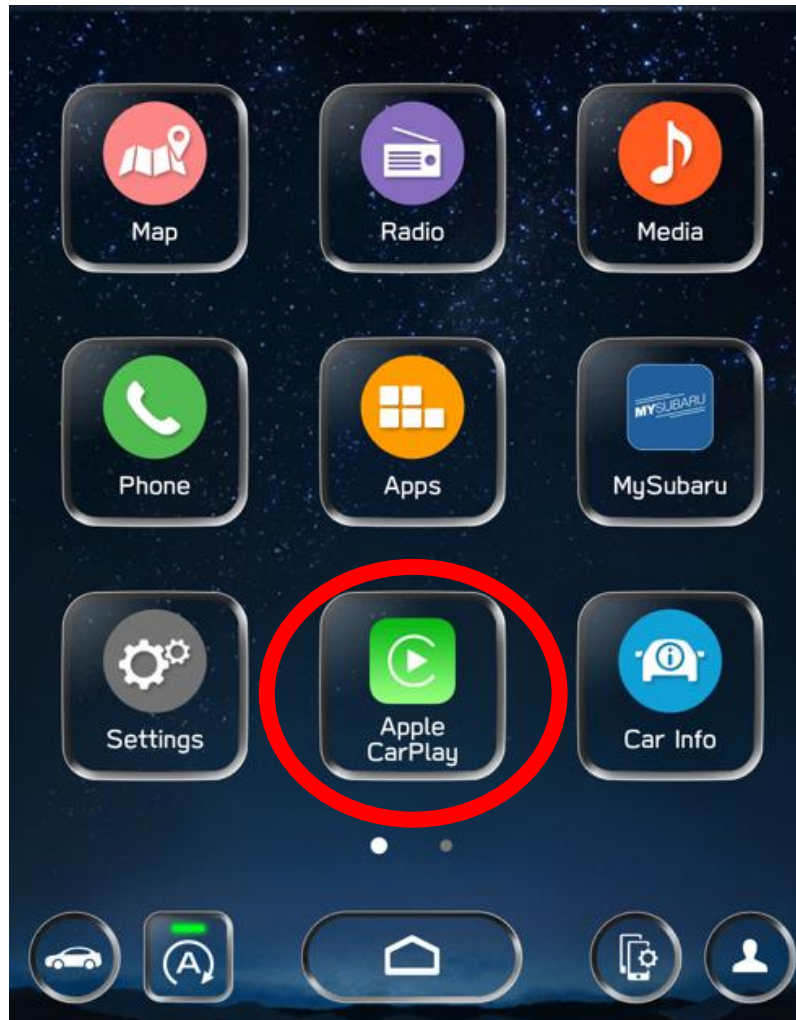
8. Select **YES** on the “Apple CarPlay” pop up on your vehicle touch screen display



9. Save it to be the favorite device that will connect first when the vehicle is started

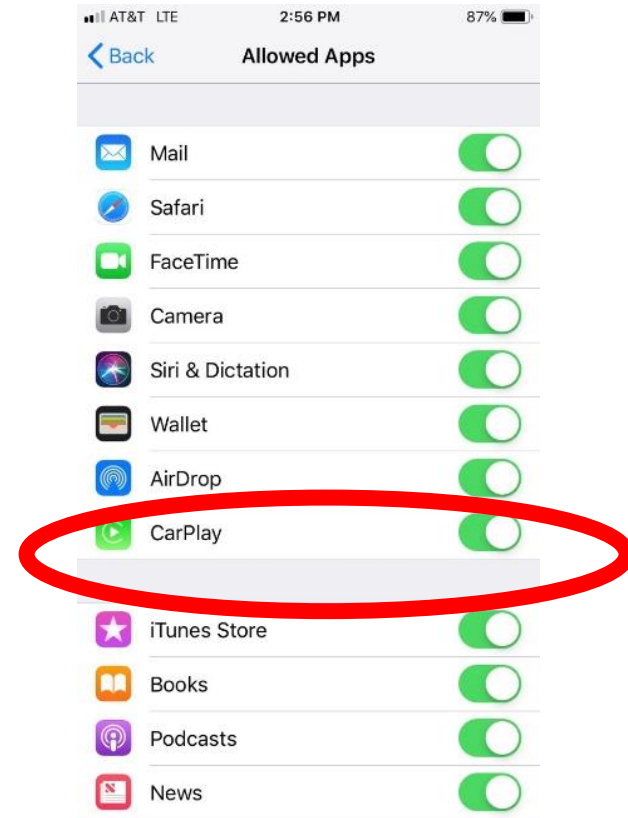


10. CarPlay will appear on the screen. If not, select the HOME button and select the CarPlay app.



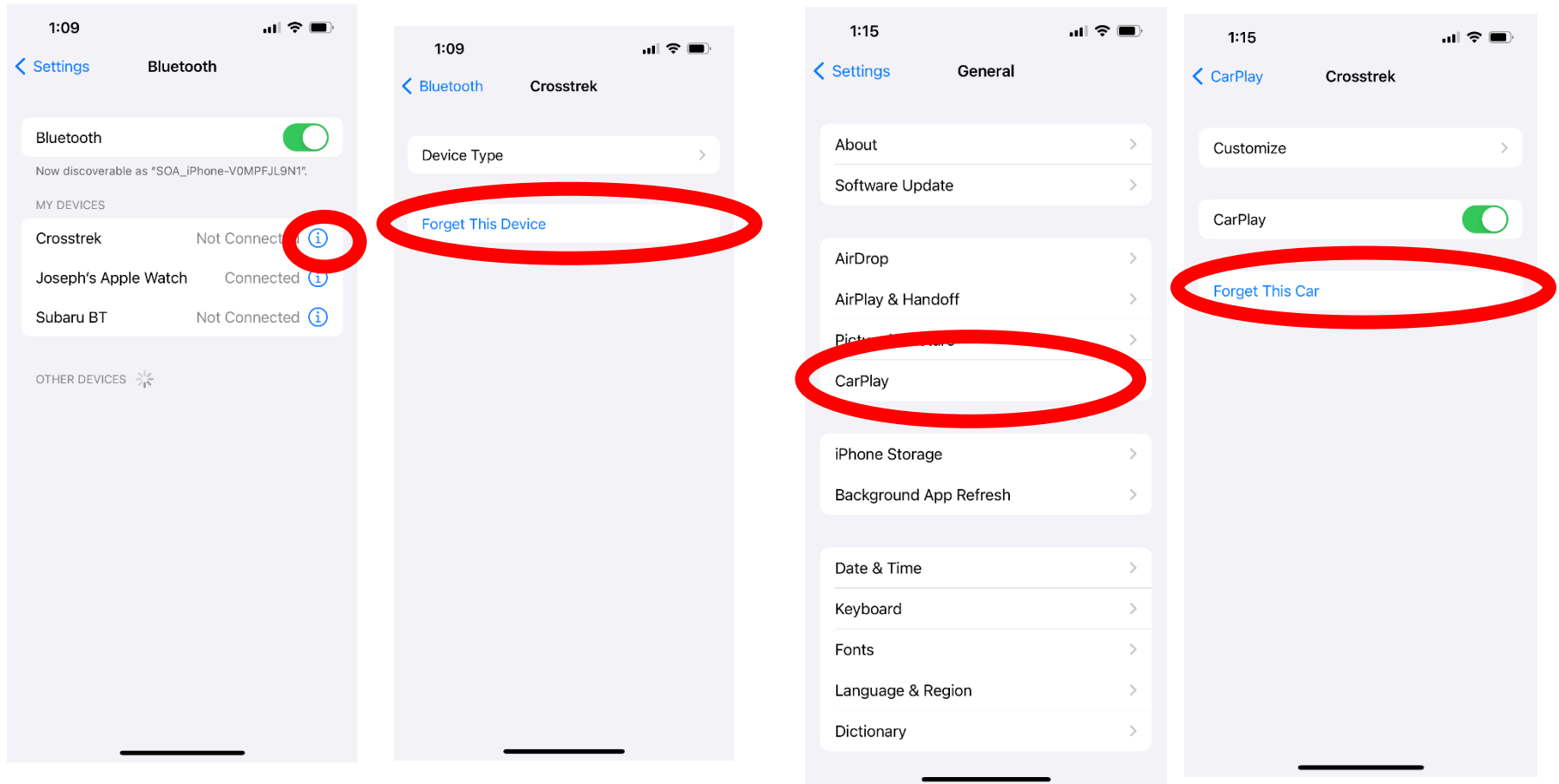
Best practices and fixes for Wireless Apple CarPlay

1. Ensure iPhone is fully up to date.
2. Ensure all other apps that work on Apple CarPlay are up to date. Ex. (Apple Maps, Spotify). Apple CarPlay might not function correctly if one of these apps is outdated or having an issue. Apps can be updated in the “App Store app”.
3. Visit the Apple CarPlay website for the latest info, FAQs and device compatibility.
 - a. <https://www.apple.com/ios/CarPlay/>
4. If CarPlay isn't launching...
 - a) Confirm CarPlay is enabled by going to: **Settings > Screen Time > Content and Privacy Restrictions**.
 - b) If “Content and Privacy Restrictions” are enabled, the slider will be green. This means there might be apps like CarPlay disabled. If so...
 - c) Select **ALLOWED APPS**
 - d) Ensure CarPlay is enabled. If slider is green, CarPlay is allowed.



If CarPlay is still not launching...

1. Go to **SETTINGS** on your iPhone and select **BLUETOOTH**
2. Select the **blue “i”** next to your vehicle
3. Select **FORGET THIS DEVICE**
4. Go to **SETTINGS** and select **GENERAL**
5. Select **CarPlay**.
6. If your vehicle is shown, select it.
7. Select **FORGET THIS CAR**



8. Select the **MANAGE DEVICES** icon on your vehicle touch screen display
9. Select **DELETE**
10. Select the iPhone to delete it from the system
11. **Start the pairing process over again or plug iPhone into the USB port to try the process over a USB cable.**

